

Educating with Purpose, Rooted in Faith.

What a Wonderful Day for a Walk-a-Thon!

Thank you! We've already surpassed our **\$12,000** goal—your generosity is incredible.

Stretch Challenge:

After chapel, I challenged our students to aim even higher. If we **top last year's \$17,000**, students will enjoy **non-uniform days the week before Thanksgiving break**.

If we reach **\$20,000+**, we'll add **another non-uniform week the week before Christmas break**.

Celebration Event:

Because we hit our goal, get ready for some fun!

- **Sumo wrestling:** Pastor Tanney vs. Mr. Becker
- **Pie-in-the-face:** A few brave teachers 😊 **When: Friday, October 31 (morning) Reminder:** Early dismissal at **11:30 a.m.** that day.

LEA Conference – No School Reminder:

Our teachers will be at the **Lutheran Education Association (LEA) Conference** in St. Louis **next Thursday–Saturday, October 2–4**.

There is **NO SCHOOL on Thursday and Friday (Oct. 2–3)**.

Important Dates:

NO SCHOOL—Thursday, October 2, and Friday, October 3

October 31—Early Dismissal at 11:30 (Teacher Meeting in the afternoon)

Faculty and Alumni Volleyball Games—Saturday, November 1, starting at 6:30 p.m.

Volunteer Hours—all families are required to accumulate 20 hours over the school year. Our PTL and Athletic Program have a variety of opportunities to volunteer. Also, your child's teacher may share some opportunities for their class. Log your volunteer hours [HERE](#)

A Few Important Reminders:

1. **No Pets** on School Grounds – While we love animals, please do not bring pets to drop-off, pick-up, or other school events for safety reasons.
2. **Dress Code Reminder** – Parents, please help us ensure your child's shorts and skirts meet the appropriate length guidelines. If a student arrives at school out of compliance with the dress code, we will contact you to bring a change of clothes.

Just a few reminders going forward:

- If your child is sick, please keep them at home.
- **Morning Drop-Off** – Drop-off begins at 8:00 a.m., and the school day starts promptly at 8:30 a.m. After 8:30, cones will block traffic from entering the main lot off of Route 72. If you arrive after this time, please use the Johnson Street entrance.
- **Chapel:** Parents, you are encouraged to attend Chapel services at Church on Wednesday morning at 8:45 with the students. Feel free to hang out in The Vine (room adjacent to the church) before and after Chapel.

If you have any questions or want to talk, please reach out.

Blessings,

Mr. Becker



Save the Date

Dates to know:

Saturday, September 27:

Varsity Boys @ Immanuel Glenview Volleyball Tournament
Cross Country Meet @ St. Peter Arlington Heights
Chancel Ringers play at Worship; 5:00 p.m.

Sunday, September 28:

Immanuel KIDS—Sunday morning; 9:15 a.m. (meet in Luther Hall)
Church Voter's Meeting; 9:15 a.m.

Monday, September 29:

Young Author's Kickoff
HOME Volleyball games
JV (4:30), Varsity Girls (5:30), Varsity Boys (6:30)

Tuesday, September 30:

HOME Volleyball games
JV (4:00), Varsity Girls (5:00)

Wednesday, October 1:

Chancel Ringers; 7:30 a.m.
Chapel-led by Mr. Berg and 7th Grade; 8:45 a.m.
MEET—Cross Country @ Marengo; 4:00 (Early Release at 3:00)
Volleyball games Away @ Trinity Roselle
JV (4:30), Varsity Girls (5:30)

Thursday, October 2:

NO SCHOOL

Teachers leave for LEA Conference in St. Louis; 6:30 a.m.

Friday, October 3:

NO SCHOOL

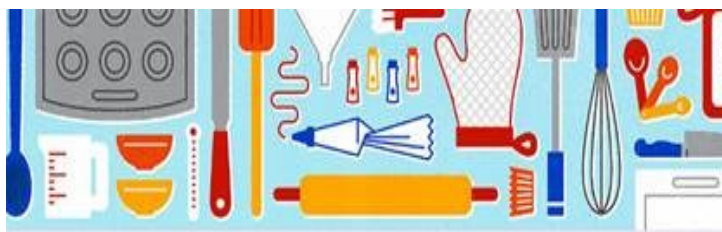
Teachers at LEA Conference

Saturday, October 4:

Teachers return home from LEA Conference; leave St. Louis after lunch.

Sunday, October 5:

Immanuel KIDS—Sunday morning; 9:15 a.m. (meet in Luther Hall)



Eagle Lunch Cafe

OCTOBER'S MENU! Deadline is Monday, Sept 29th!



CHURCH NEWS www.immanuel-ed.org

Worship Times: Saturday 5:00pm, Sunday 8:00am & 10:30am

Join Us For Worship!

Nexus

NEW MEMBER CLASSES BEGIN OCTOBER 12TH!

If you are looking for a church home, we invite you to check us out here at Immanuel Lutheran Church in East Dundee. Twice a year or so our congregation holds classes to both give more information on the teachings of Immanuel and help people make an informed decision in joining our church. Classes meet on Sunday mornings and are led by Pastor Yonker. Our next session begins on October 12 at 9:15 a.m. in the church office. The AIM class is fast moving, direct, filled with humor, stories and each week you will dig into God's Word to see what it has to say about our life, our faith & our church. This series of classes you see the major beliefs and teachings of the Lutheran Church and you are personally invited to attend! Please contact the church office at 847-428-4477 if you would like to register. *Recent transfers are encouraged to attend! Babysitting is available! We pray that the Holy Spirit continues to draw you closer to our life-giving Savior each and every day.*

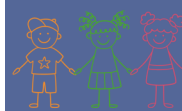
The Harvey & Ethel Daeumer Foundation

Join us in Thanking the Foundation for Two Generous Grants -

\$11,918 - To Fund 32 i-Pad upgrades at school
\$13,000 - Immanuel Lutheran Scholarship Fund



MISSION STATEMENT: To support local charitable causes for children's education, health, development and welfare; and improvements and comfort for the sick, aged, or disabled.



Childcare Help Needed

November 3 & 4



Immanuel is hosting PALS and we need help in the nursery:

Mon, Nov. 3rd: 9 am–12 pm & 1 pm–4pm

Tue, Nov. 4th: 9am–12pm

Shifts can be split, compensation provided.

Contact Nicole Tanney: nicoletanney@gmail.com | 262-244-9159

SIP & PAINT

Hosted by the
Senior Fellowship Group

Wednesday, October 29
2:00–4:00 P.M.

Join us in Luther Hall and
let your creativity shine!

R.S.V.P. by October 22
Call the church office
at 847-428-4477!



F.I.S.H. FOOD PANTRY WISH LIST HOLIDAY SEASON 2025

Please help your neighbors with these most needed items.

Stuffing *
Turkey Gravy
Whole Kernel Corn
Green Beans
Dry Pinto Beans *
Salt/Pepper/Spices

Canned Sweet Potato
Rice / Tuna
Brownie/Cake Mix
Breakfast Cereal *
Hot Cocoa

Spaghetti Sauce/Pasta
Oatmeal/Hot Cereal
Canned Fruit Cocktail
Canned Peaches/Pears
Baby Wipes *

* Greatest Need Items



Home volleyball schedule

TUES SEPT 9	4:30 Var Boys 5:30 Var Girls vs Naperville
MON SEPT 15	4:30 Var Boys 5:30 JV 6:30 Var Girls vs Batavia
MON SEPT 29	4:30 JV 5:30 Var Girls 6:30 Var Boys vs Mt. Prospect
TUES SEPT 30	4:00 JV 5:00 Var Girls vs Schaumburg
TUES OCT 7	4:00 Var Boys 5:00 JV 6:00 Var Girls vs Crystal Lake
TUES OCT 14	4:00 JV 5:00 JV vs Belvidere
WED OCT 15	4:15 Var Boys 5:15 JV 6:15 Var Girls 7:15 Var Girls vs Marengo
MON OCT 20	4:30 Var Boys vs Palatine 5:30 JV&Var Boys vs Marengo

HOME JV TOURNAMENT OCTOBER 11

ATHLETICS

Athletic Director

Mrs. Chris Navarro

cnavarro@immanuel-ed.org

[ATHLETIC CALENDAR](#)



Join us for this free event!
Crafts, Food, Music & Fun!

Immanuel Lutheran School
Parking Lot



Tequila Val's

Has graciously agreed to support our school
by donating 20% of all Food & Beverage Purchases back to
Immanuel Lutheran School to use towards grades K- 8 curriculum.
Tell your family and friends for a great night out or in!

Wednesday October 8, 2025

11:00 am – 10:00 pm

Mention: Immanuel Lutheran Dine n Share
and bring your device to show the flyer.



309 Meier St. East Dundee

847-861-8257

www.tequilavals.com



[https://
ilsamazonwish-
lists.my.canva.site/](https://ilsamazonwishlists.my.canva.site/)



MUSIC NOTES

Mrs. Kris Bartelt

Music Teacher

kbartelt@immanuel-ed.org

847.428.4477 ext. 226

Fall-ing for Music! Recently, some primary classes are playing a game with the song “Apple Tree” while singing and playing xylophones and other instruments. Fourth graders are really growing in their recorder skills and will soon even get to play outside in small groups. And fifth graders began learning to play ukulele today! Sixth graders are working in groups to create and perform “Rhythm Shows” for their classmates, while grade 7 student groups will perform Stomp-like rhythm routines for their peers next week.

MusicPlayOnline.com is a site Immanuel students can go to for fun music games to practice rhythms, note names and other music skills, as well as try out various instruments, create melodies, and more. Immanuel’s schoolwide subscription allows each student access to many of the music games we use in music classes.

All you need is the **access code—i289777** to log in as a student. (Usually needed just the first time on a device—kids use our “Jelly Bean Song” to remember: “i 2 89 777” (MusicPlayOnline). Once in, look to the left side and click on GAMES (or the picture of the game controller) to access some of the games your student might know from class. Students can click on other icons to explore virtual instruments, find songs, practice rhythms and more.

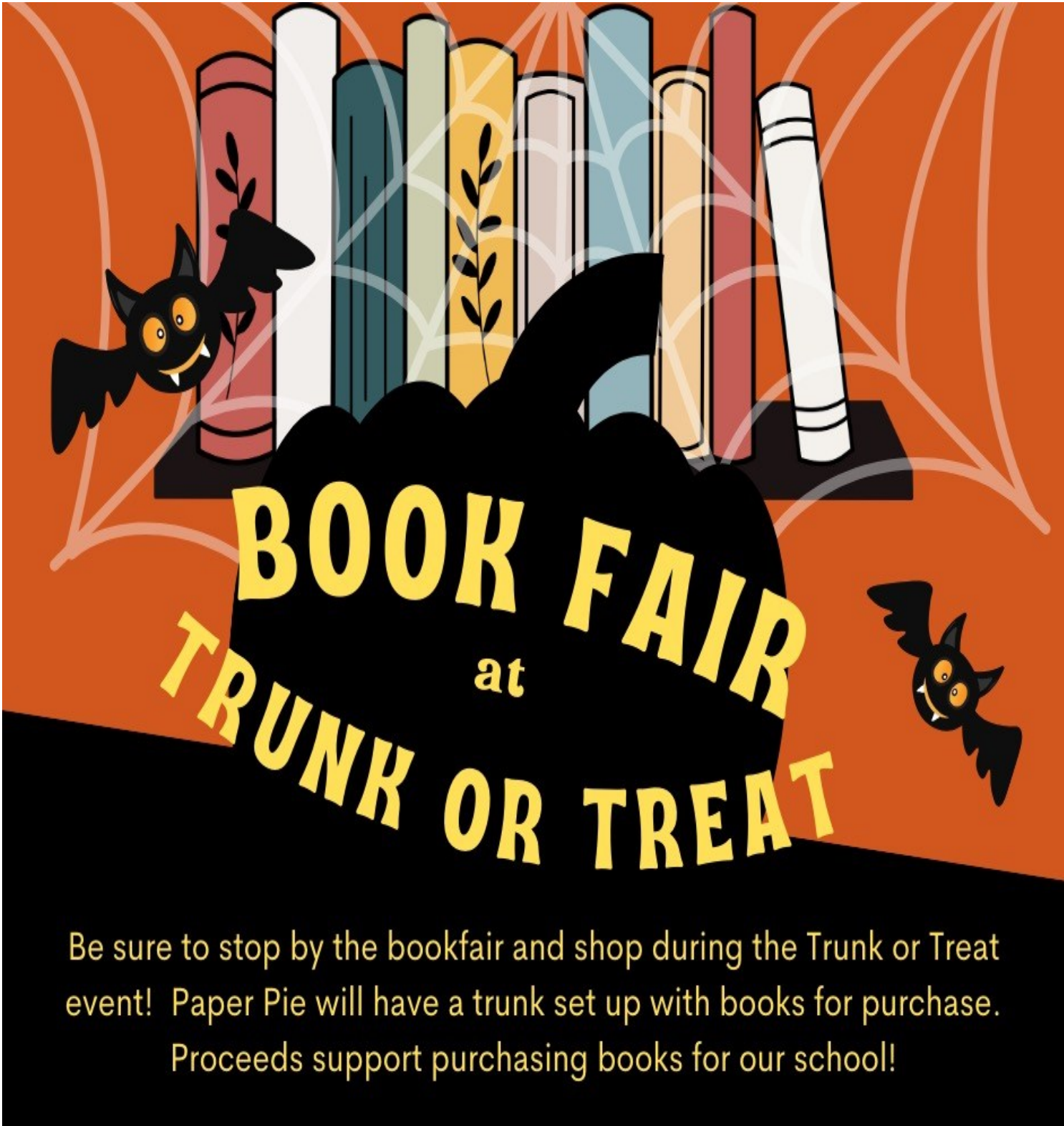


**Picture Retake Day is
Tuesday, October 28th!**

Part-time help needed!

1. Extended Care Help Needed – We are looking for extra help in the afternoons to walk our PK/K+ students from church over to the school. We are also in need of substitute helpers for Extended Care.
2. Nursery Help on Sundays – We are seeking help in the nursery on Sunday mornings from 8:00 a.m.–12:00 noon.

Both of these opportunities are paid positions. If you know someone who may be interested, please have them reach out to Becky Sweemer at 224-239-3051.

A graphic for a book fair. At the top, a row of colorful books (red, white, blue, green, yellow, grey, blue, orange, red, white) sits on a black shelf. A black bat with orange eyes and a yellow smile is on the left, and another is on the right. White spider webs are scattered across the orange background. A large black cloud-like shape in the center contains the text 'BOOK FAIR at TRUNK OR TREAT' in yellow. The bottom of the graphic is a solid black area containing white text.

BOOK FAIR at TRUNK OR TREAT

Be sure to stop by the bookfair and shop during the Trunk or Treat event! Paper Pie will have a trunk set up with books for purchase. Proceeds support purchasing books for our school!



Manna News: **What is Manna?** Manna is a fundraising program that offers individual gift certificates to many businesses. Immanuel families have the opportunity to pre-order gift cards online or by submitting a paper form to the school or church. Each gift card will earn a percentage of profit, as shown on the order sheet. Please visit the Manna website at www.RaiseRight.com for the current gift cards available. Online ordering and payment is also available, please contact us for your sign on information and follow the online instructions. You can choose how you want to have your profit spent.

Please make sure to clearly state whether you are contributing to Church, Tuition/PTL, ALL PTL, Youth, or Scholarship. <https://immanuel-ed.org/our-school/support#manna>.

October manna order dates will be Sunday, October 4th and 19th. You may order online or through paper order NO LATER THAN NOON on the day of the order. If you are paying by check, please make sure to place your payment in the church or school manna box by the order deadline date and time. Orders are available for pick-up the Wednesday following an order date at your chosen location (church or school office). As a reminder, shopwithscrip.com has been changed to RaiseRight.com. There are NO CHANGES to your account or sign-in! Plus, no changes have been made to the mobile app as well. If you need to set up an account, please email or call for our unique online code. If you have any questions, please contact Amanda via email at ademarsh@immanuel-ed.org or call Erin at 847-772-4792.



Eagle's Nest Child Care

Please register the **WEDNESDAY** before use. Click the link below to register for the week or more.

<https://forms.gle/cxGDufr2XzVZ78GS8>

- **Friday, October 31st and May 22nd. No childcare after school.**

SPIRIT WEAR! ORDER HERE! Check out the new items on the

Spirit Wear website: <https://stores.inksoft.com/ildspirit/shop/home>



You may now log in to portal.myschoolworx.com or download the Schoolwork app.

Please call the school office for any additional help logging in. You will be prompted to change your password at first login.

Username: Your Parent Email

Password: eagles, Eagles24!, or Eagles2024!

Marla's Hot Lunch [Click here](#) to sign up and order! All orders must be in by Weds 9:00 am before the week of service!

Code ILS415



**2025-2026
SCHOOL
YEAR
CALENDAR**

**2025-2026
Yearly School
Calendar**