



Immanuel Lutheran
CHURCH AND SCHOOL

Please call the school office with any questions.

847-428-1010

Principal Mr. Kevin Becker

kevinbecker@immanuel-ed.org

School Secretary Mrs. Torie Kamp

tkamp@immanuel-ed.org

Educating with Purpose, Rooted in Faith.

Operetta: Our 1st-4th grade students have done a great job in their performances. If you have not done so, you have one more chance to see them shine tonight at 6:30 p.m.

Congratulations to two of our 8th graders, Bryleigh and Miles, for earning Blue Ribbons at the State History Fair in Springfield yesterday.

Save the Date—Immanuel Golf Outing-Friday, August 1, at Bonnie Dundee Golf Club.

Attention! Two items for you to be reminded about:

Pets are not allowed on school grounds. Even though I like dogs and other animals, please do not bring them to carline; it is a safety issue.

Dress Code—Parents, please help us and ensure your child's shorts are not too short.

[VOLUNTEER OPPORTUNITIES](#)

Just a few reminders going forward:

If your child is sick, please keep them at home.

If you have any questions or want to talk, please reach out.

Blessings,

Mr. Becker

Dates to know:

Friday, May 2:

Operetta: Performance; 6:30 p.m.

Saturday, May 3:

Track Meet at Freeport

Sunday, May 4:

Preschool sings at Worship; 10:30 a.m.

Monday, May 5:

Moms, Mimosas, and Muffins; 7:45 a.m.

Teacher Appreciation Week Begins

Flower Sale Pickup; 7:00-8:00 p.m.

Tuesday, May 6:

Band Rehearsal; 7:30 a.m.

Flower Sale Pickup; 7:30-8:30 a.m. AND 3:15-5:00 p.m.

PTL Teacher Breakfast 7:30 am

Wednesday, May 7:

Chancel Ringers (last one); 7:30 a.m.

Scholastic Bowl at Marengo; 9:00 a.m. – 1:00 p.m.

Preschool Mom's Art Extravaganza (Luther Hall); 5:30-7:00 p.m.

Spring Concert in the gym; 6:30 p.m.

Thursday, May 8:

Chorus (last one); 7:30 a.m.

PTL Teacher Lunch

Friday, May 9:

Chancel Chimes; 7:30 a.m.

Kindergarten Showcase Dress Rehearsal; 10:00 a.m.

Kindergarten Early Dismissal; 11:00 a.m.

Kindergarten Showcase; 6:30 p.m.

Saturday, May 10:

Track Meet at Marengo

Sunday, May 11:

Mothers Day

Monday, May 11:

7th/8th Grade leave for Washington DC—Class Trip



Save the Date



2025-2026

Tuition and Fees



2025-2026
SCHOOL
YEAR
CALENDAR

2025-2026

Yearly School Calendar



CHURCH NEWS www.immanuel-ed.org

Worship Times: Saturday 5:00pm, Sunday 8:00am & 10:30am

Join Us For Worship!

[Nexus](#)



The Adventure Begins at VBS!

June 9–13
9am–12noon

More Details Online at:
immanuel-ed.org/childrens-ministry

The Best Week of the Summer!

New Friends | Surprising Adventures | Incredible Music
Amazing Experiments | Creative Games

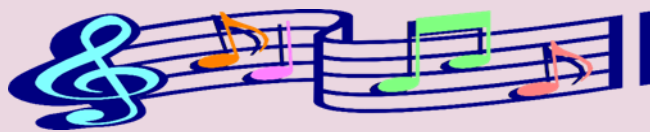


Vine Connection Time this Wednesday (5/7)

This week's chapel service will be led by Mr. Dave Meier. Parents and family members are always welcome to worship with us and are invited to enjoy a morning snack and coffee in the Vine between morning drop off and the start of chapel.

MUSIC NOTES

Mrs. Kris Bartelt, music teacher
kbartelt@immanuel-ed.org



Some Upcoming Music Dates/Details for ILS Musicians:

This Sunday, May 4th - PK students sing at chapel

Wednesday, May 6th at 6:30 pm – Spring Music Concert

(Bands, Chorus, and Bells (7-8) and Chimes (5-6) groups perform)

Hanging Baskets and Planters will be delivered to Immanuel's gym on Monday, May 5th. Pickup times for those who ordered plants are:

Monday, May 5th between 7:00-8:30 pm

Tuesday, May 6th from 7:30-8:30am or 3:15-5:00pm

Questions? Contact Kris Bartelt at kbartelt@immanuel-ed.org.

"CHANCE TO SHINE" in Music Class: Next week gr. 1-5 students will talk about this *optional* opportunity to share their music related talents with classmates. Parents, watch for the Chance to Shine explanation letter/sign-up sheet in your student's daily mail on Tuesday or Wednesday. We're looking forward to enjoying a wide variety of musical performances in the weeks ahead-- let the music making begin!

Chorus End of Year Breakfast – These student musicians will wrap up the 2024-25 chorus season with a hot breakfast at 7:30 am in Luther Hall on Thursday, May 8th. Yum! Students can be dropped off at the **main church entrance** that morning.

ATHLETICS

Athletic Director

Mrs. Chris Navarro

cnavarro@immanuel-ed.org



Summer Camps:

[Basketball](#) and [Volleyball](#)



Eagle's Nest Summer Camp

We are excited to have Eagle's Nest Summer Camp return this summer. If you are looking for child care, especially before and/or after the fantastic sports, VBS, Summer Youth Theater, and other camps taking place here this summer, we've got the place for you! This year we are offering full day, half day, as well as before and/or after camp "camps." Pricing is by the week and is due at the time of registration. Hours are 8 a.m. -5:30 p.m. There is no drop off care this summer. This will help with staffing and planning some fun activities in the Dundee area.

Questions, please contact Mrs. Zinck at jzinck@immanuel-ed.org.

[Click here if you need to use the Eagle's Nest over the summer.](#)

One time summer registration fee \$30 per family

\$250.00 per week for a full day

\$150.00 per week 1/2 day am or pm (up t 4 hours per day)

\$75.00 per week for less than 3 hours a day per day

This is subject to change base on the schedule of our special events. Additional event costs might be needed for the event over and above the weekly charge.

Reservations and payment are due and required before use. Reservation due the Wednesday before the week of use. Thank you!

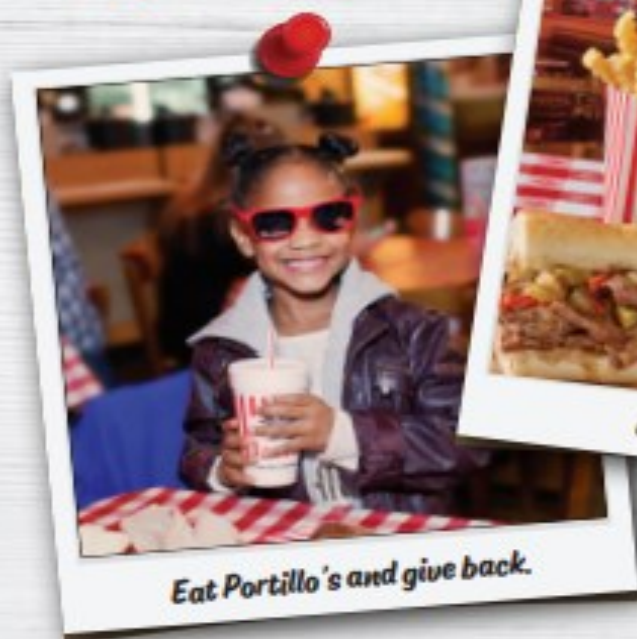


[This Photo](#) by Unknown Author is



[This Photo](#) by Unknown Au-

You're invited to a
Portillo's®
FUNDRAISER



Eat Portillo's and give back.



Come join us!



Keep 20% of the Proceeds

Join us at Portillo's for a fundraiser to support:

Immanuel Lutheran School

When:

May 6, 2025

5:00 PM - 8:00 PM

at the Portillo's located at:

1801 S. Randall Rd.

Algonquin, IL

20% of sales will benefit your organization. Order online or in app for pickup using code **PORTILLOS84** before checkout in the "Coupon Code" field, or show this flyer or a digital version to cashier when ordering at the restaurant. Valid on drive thru, pickup, kiosk, and in restaurant orders.

Portillo's
FOR GOOD

portillos.com/community

For online/app orders to qualify for the fundraiser, orders must be placed for pickup only, from the participating restaurant, on the fundraiser date and during the listed fundraiser hours. Gift card purchases, delivery orders, and orders placed on the third party websites are excluded from the fundraiser. Online ordering subject to availability. \$200 minimum fundraising sales required for the organization to receive donation. Cannot be combined with other offer codes.

ILS Teacher Appreciation Week

2024-2025

May 5-9

Monday 5/5

School Supplies

School supplies or school themed items

AMAZON WISHLISTS

Tuesday 5/6

Breakfast

Sponsored by K-8
Teachers and Staff
will enjoy a special
breakfast!

Wednesday 5/7

Candy/Fruit

Candy, fruit, or candy
or fruit themed items

Thursday 5/8

PTL Lunch

PTL will be serving
the AMAZING
ILS Staff lunch!
Parents will supervise students for
the teachers during lunches!

Friday 5/9

Cards

Cards, gift cards, or
anything else that shows
your appreciation for
the ILS Staff!

ALL AMAZING
STAFF AT ILS:

STAFF
LIST



ILS END OF SCHOOL

★ *Dairy Queen* ★

★ **TREATS!** ★

FOR ALL STUDENTS AND STAFF!



Monday, May 12th: PK
Monday, May 19th: K-8

SPONSORED BY PTL



EAGLE LUNCH CAFE

May Lunch Options

<https://forms.gle/kA7oVwiaS6qw8EB76>



Manna News: **What is Manna?** Manna is a fundraising program that offers individual gift certificates to many businesses. Immanuel families have the opportunity to pre-order gift cards online or by submitting a paper form to the school or church. Each gift card will earn a percentage of profit, as shown on the order sheet. Please visit the Manna website at www.RaiseRight.com for the current gift cards available. Online ordering and payment is also available, please contact us for your sign on information and follow the online instructions. You can choose how you want to have your profit spent.

Please make sure to clearly state whether you are contributing to Church, Tuition/PTL, ALL PTL, Youth, or Scholarship. <https://immanuel-ed.org/our-school/support#manna>.

May manna order dates will be this Sunday, May 4th and Sunday, May 18th. Summer order dates will be made available soon! You may order online or through paper order NO LATER THAN NOON on the day of the order. If you are paying by check, please make sure to place your payment in the church or school manna box by the order deadline date and time. Orders are available for pick-up the Wednesday following an order date at your chosen location (church or school office). As a reminder, shopwithscrip.com has been changed to RaiseRight.com. There are NO CHANGES to your account or sign-in! Plus, no changes have been made to the mobile app as well. If you need to set up an account, please email or call for our unique online code. If you have any questions, please contact Amanda via email at ademarsh@immanuel-ed.org or call Erin at 847-772-4792.



Eagle's Nest Child Care

Please register the **WEDNESDAY** before use. Click the link below to register for the week or more. <https://forms.gle/cUggDhYAeb3Qvtrx5>

****There will be no extended care after school on May 22 or May 23rd.**

SPIRIT WEAR! ORDER HERE! Check out the new items on the

Spirit Wear website: <https://stores.inksoft.com/ildspirit/shop/home>



You may now log in to portal.myschoolworx.com or download the Schoolwork app. Please call the school office for any additional help logging in.

Username: Your Parent Email **Password:** eagles, Eagles24!, or Eagles2024!

You will be prompted to change your password at first login. If you are having trouble, request

Marla's Hot Lunch Click here to sign up and order! All orders must be in by Weds 9:00 am before the week of service! Code ILS415



2024-2025 Yearly School Calendar!