



**Immanuel Lutheran**  
CHURCH AND SCHOOL

Please call the school office with any questions.

847-428-1010

Principal Mr. Kevin Becker

[kevinbecker@immanuel-ed.org](mailto:kevinbecker@immanuel-ed.org)

School Secretary Mrs. Torie Kamp

[tkamp@immanuel-ed.org](mailto:tkamp@immanuel-ed.org)

### *Educating with Purpose, Rooted in Faith.*

**Easter Egg Hunt tomorrow!** Please join us for our annual PTL Easter Egg Hunt tomorrow morning from 9:30-11:30 a.m. This event is open to everyone—bring a friend.

This Sunday is Palm Sunday, the beginning of **Holy Week**. We invite you to worship with us during the week:

Sunday, April 13, **Palm Sunday**—8:00 a.m. and 10:30 a.m.

Thursday, April 17, **Maundy Thursday**—10:30 a.m. and 6:30 p.m.

Friday, April 18, **Good Friday**—10:30 a.m. and 6:30 a.m.

Sunday, April 20, **EASTER**—6:00 a.m., 8:00 a.m., and 10:30 a.m.

Next week marks the midterm for the 4<sup>th</sup> quarter. **Midterm reports** will be available through **MySchoolWorx** on Thursday at the end of the school day. To access report cards on MySchoolWorx, navigate to the "Reports" section, typically found on the dashboard or in the main menu. Within the "Reports" area, locate the "Report Cards" section, where you can view and potentially print or export your child's report card.

#### [VOLUNTEER OPPORTUNITIES](#)

#### **Just a few reminders going forward:**

- If your child is sick, please keep them at home.

If you have any questions or want to talk, please reach out.

Blessings,

Mr. Becker



Save the Date

**Dates to know:**

- Friday, April 11:  
Fine Arts Festival at Grace River Forest (Grades 5-8)
- Saturday, April 12:  
PTL Easter Egg Hunt (open to the Community); 9:30 – 11:30 a.m.  
**3<sup>rd</sup> Year Confirmation Witnessing Service; 5:00 p.m.**
- Sunday, April 13:  
Palm Sunday
- Monday, April 14:  
Field Trip—1<sup>st</sup> Grade to Morton Arboretum
- Tuesday, April 15:  
Band Rehearsal; 7:30 a.m.
- Wednesday, April 16:  
Chancel Ringers; 7:30 a.m.  
Chapel; 8:45 a.m.  
PK 3 Easter Party  
Operetta Practice (Grades 1-4); 1:00-2:30 p.m.  
Operetta Cast Practice; 3:15-4:45 p.m.
- Thursday, April 17:  
Chorus; 7:30 a.m.  
PK 4 Easter Party  
**Spring Pictures; 9:00 a.m.**  
**Graduation Pictures; 10:00 a.m.**  
Midterms Published  
Maundy Thursday Worship—10:30 a.m. and 6:30 p.m.
- Friday, April 18:  
**NO SCHOOL—GOOD FRIDAY**  
Worship—10:30 a.m. and 6:30 p.m.
- Sunday, April 20:  
**EASTER—CHRIST is RISEN!**  
Worship—6:00 a.m., 8:00 a.m., and 10:30 a.m.
- Monday, April 21:  
**NO SCHOOL**



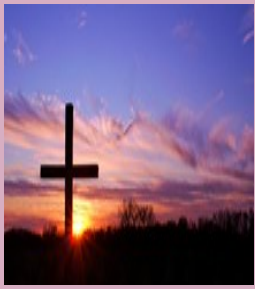
**The Adventure Begins at VBS!**

**June 9–13**  
**9am–12noon**

More Details Online at:  
[immanuel-ed.org/childrens-ministry](http://immanuel-ed.org/childrens-ministry)

**The Best Week of the Summer!**

**New Friends | Surprising Adventures | Incredible Music**  
**Amazing Experiments | Creative Games**



# CHURCH NEWS [www.immanuel-ed.org](http://www.immanuel-ed.org)

Worship Times: Saturday 5:00pm, Sunday 8:00am & 10:30am

Join Us For Worship!

**Nexus**

## **HOLY WEEK BEGINS**

### **April 13—PALM SUNDAY**

April 14, 15, 16 & 17—Eucharist Service 6:30a.m.

### **April 17—MAUNDY THURSDAY**

10:30a.m. & 6:30p.m. Worship *w/Holy Communion*

### **April 18—GOOD FRIDAY**

10:30a.m. & 6:30p.m. Worship

*No 5:00p.m. Worship on Holy Saturday*

### **April 20—EASTER WORSHIP /w/Holy Communion**

6:00a.m. / 8:00a.m. / 10:30a.m.

*Easter Breakfast Served between Services*

(847) 428-74477 \* [immanuel-ed.org](http://immanuel-ed.org)

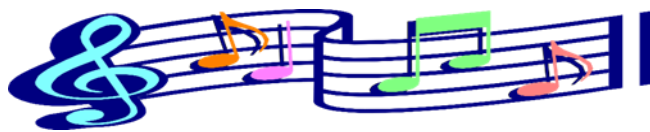


#### **Vine Connection Time this Wednesday (4/16)**

Parents and families are welcome to come to “The Vine”, Immanuel’s coffee/fellowship space any time the church is open. Those who come on Wednesdays between morning drop off and chapel at 8:45 can enjoy a morning snack and coffee. This week’s chapel service will be led by Miss Cami Heinisch.

# **MUSIC NOTES**

Mrs. Kris Bartelt, music teacher  
[kbartelt@immanuel-ed.org](mailto:kbartelt@immanuel-ed.org)



## **ILS Musicians Using Their Talents**

**The Lutheran Fine Arts Festival** was TODAY (4/11) at Grace Lutheran School in River Forest. This year ILS sent gr. 5-8 chorus students, gr. 7-8 bell ringers, and experienced band students. Many ILS students also submitted art entries for judging. Students, thanks for representing ILS at this event. What a great celebration of music!

**Gr. 5-6 Chancel Chimes** play in the 5pm worship service THIS Saturday, April 12<sup>th</sup>.

**“Spend Awhile on the Nile”**- Gr. 1-4 students will perform this wonderful operetta in early May. We’re all working hard and having fun learning songs, movement, and more. The show has a great message about God’s truths, His faithfulness and His never-ending love for all His children. (Try searching the show title on YouTube-you can find other groups’ performances and hear fun songs such as “Poor, Poor, Pharoah”, “You Never Let Go”, “Spend Awhile on the Nile” and “Who Is Like the Lord”).

## **ATHLETICS**

**Athletic Director**

Mrs. Chris Navarro

[cnavarro@immanuel-ed.org](mailto:cnavarro@immanuel-ed.org)



**Athletic Schedule!**

**Summer Camps:** Basketball and Volleyball. More information coming soon!

**Spring Pictures on Thursday, April 17th!**

**K-8 Grade Pictures**

**8th Grade Group Picture on front steps of school**

**8th Grade Cap and Gown**

**Eagle's Nest Summer Camp** We are excited to have Eagle's Nest Summer Camp return this summer. If you are looking for child care, especially before and/or after the fantastic sports, VBS, Summer Youth Theater, and other camps taking place here this summer, we've got the place for you! This year we are offering full day, half day, as well as before and/or after camp "camps." Pricing is by the week and is due at the time of registration. Hours are 8 a.m. -5:30 p.m. There is no drop off care this summer. This will help with staffing and planning some fun activities in the Dundee area. Questions, please contact Mrs. Zinck at [jinck@immanuel-ed.org](mailto:jinck@immanuel-ed.org). [Click to let us know if you need to use care over the summer.](#)



This Photo by Unknown Au-

This Photo by Unknown Author is



**Immanuel Lutheran**  
CHURCH AND SCHOOL  
Invites you to attend



Please RSVP by returning this form by Friday, May 2<sup>nd</sup>

Mom's Name \_\_\_\_\_

Mom's Email \_\_\_\_\_

Student(s) Attending Name and Grade(s):

\_\_\_\_\_

\_\_\_\_\_

\_\_\_\_\_

**MOMS, MUFFINS, MIMOSAS & MORE**

**Immanuel Moms!**  
You're invited to come and enjoy a "FAUXMOSA" and a muffin with your FFF, PK and K-8<sup>th</sup> child(ren) at Immanuel Lutheran School in the Gym!

**Monday, May 5<sup>th</sup>**  
**7:45-8:45**

After your student is dismissed at 8:15, please stay and share in a Motivational, Mother's Day Message from Pastor Yonker our Senior Pastor at ILS-East Dundee.





**The Village Squire in Dundee**

Has graciously agreed to support our school by donating 20% of all Food & Beverage Purchases (Excluding Alcohol) back to Immanuel Lutheran School- PTL to use towards K- 8 curriculum.

Monday April 28, 2025  
11:00 am - 10:00 pm

This applies to Dine In or carry out



125 Washington Street, West Dundee, IL 847-428-4433



**EAGLE LUNCH CAFE**

**April Lunch Options**

<https://forms.gle/kA7oVwiaS6qw8EB76>



**1<sup>st</sup> – 4<sup>th</sup> Grade Operetta Information and Links**

**Links for your reference:**

- [General Info](#)
- [Performance information](#)
- [Parent volunteer form](#)
- [T-shirt information](#)
- [Dedication ad](#)
- [Operetta after school schedule](#)



**Manna News:** **What is Manna?** Manna is a fundraising program that offers individual gift certificates to many businesses. Immanuel families have the opportunity to pre-order gift cards online or by submitting a paper form to the school or church. Each gift card will earn a percentage of profit, as shown on the order sheet. Please visit the Manna website at [www.RaiseRight.com](http://www.RaiseRight.com) for the current gift cards available. Online ordering and payment is also available, please contact us for your sign on information and follow the online instructions. You can choose how you want to have your profit spent.

**Please make sure to clearly state whether you are contributing to Church, Tuition/PTL, ALL PTL, Youth, or Scholarship.** <https://immanuel-ed.org/our-school/support#manna>.

April manna order date will be Sunday, April 13th and 27th. You may order online or through paper order NO LATER THAN NOON on the day of the order. If you are paying by check, please make sure to place your payment in the church or school manna box by the order deadline date and time. Orders are available for pick-up the Wednesday following an order date at your chosen location (church or school office). As a reminder, shopwithscrip.com has been changed to RaiseRight.com. There are NO CHANGES to your account or sign-in! Plus, no changes have been made to the mobile app as well. If you need to set up an account, please email or call for our unique online code. If you have any questions, please contact Amanda via email at [ademarsh@immanuel-ed.org](mailto:ademarsh@immanuel-ed.org) or call Erin at 847-772-4792.

### Eagle's Nest Child Care

Please register the **WEDNESDAY** before use. Click the link below to register for the week or more. <https://forms.gle/cUgqDhYAeb3Qvtrx5>

**\*\*There will be extended care ONLY in the morning on Thursday, March 6<sup>th</sup>. No afternoon school care! Dismissal at 11:30.**



**SPIRIT WEAR! ORDER HERE! Check out the new items on the**

**Spirit Wear website:** <https://stores.inksoft.com/ildspirit/shop/home>



You may now log in to [portal.myschoolworx.com](http://portal.myschoolworx.com) or download the Schoolwork app. Please call the school office for any additional help logging in.

**Username:** Your Parent Email    **Password:** eagles, Eagles24!, or Eagles2024!

You will be prompted to change your password at first login. If you are having trouble, request

**Marla's Hot Lunch Click here to sign up and order! All orders must be in by Weds 9:00 am before the week of service! Code ILS415**



**2024-2025 Yearly School Calendar!**